



## MARATHON COACH 2023 FLOORPLANS





Having built more than 1,300 custom motorcoaches for customers across the globe, we've created almost every imaginable option and heard all sorts of creative requests. From the revolutionary wardrobe-to-bunks feature and Kitchen Dream Center to gold-plated sinks and adjustable beds, if you can imagine it, chances are we can make it a reality.

Marathon is proud to have retained many long term, dedicated employees having over 1,600 years of combined experience. Because of this experience, Marathon's advanced technologies and patented systems, such as TechLink, an electrical smart house networking system, and Freedom Plus, an automated sewer hose system, maintain the company's position at the forefront of the recreational vehicle and corporate coach industry.

Marathon's three locations across the United States provide our clients with the best possible service, new coach customization experience and pre-owned coach selection and sales.

*"At Marathon, the purchase of a coach is only the beginning of our relationship with you. Because providing the best service possible to our customers is one of our core values, we welcome you into our family, and then strive to ensure that our "new" family member is well taken care of. On behalf of everyone, I wish to thank you all for your continued support and for being part of the Marathon family. Happy travels, and please let me know if I, or my team, can ever do anything for you."*

Steve Schoellhorn  
President and Owner



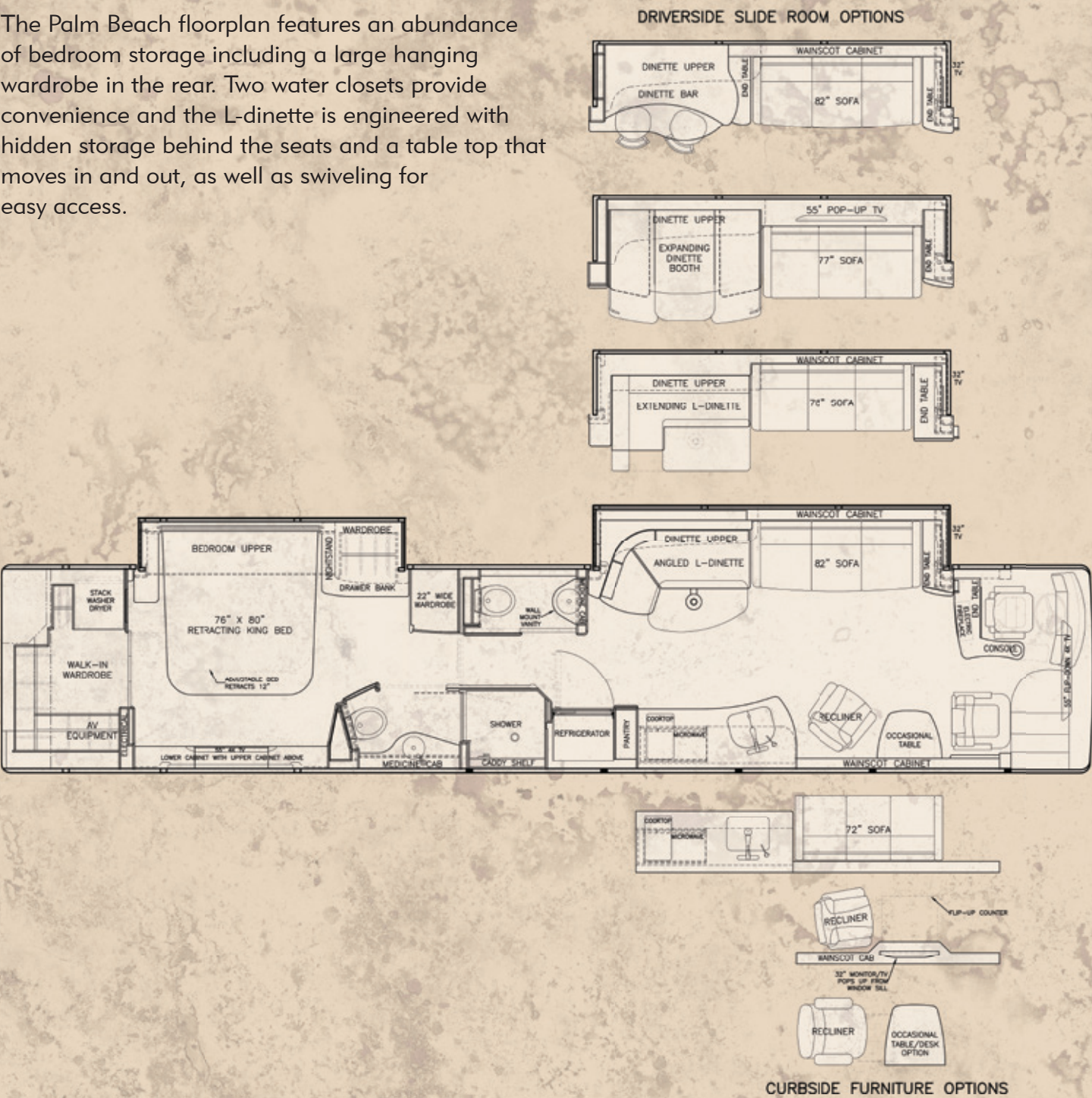
BRECKENRIDGE | PREVOST X3-45 CHASSIS WITH TWO SLIDES

Why choose between bunks or wardrobe space when you can have both? The convertible wardrobe-to-bunks space starts as a large hanging wardrobe and with the touch of a button converts into a two-person set of bunk beds: convenient and easy. The bedroom has three additional large wardrobe storage areas along with a king bed that electrically folds and retracts, providing space to get to the back of the coach – even with the slide rooms pulled in.



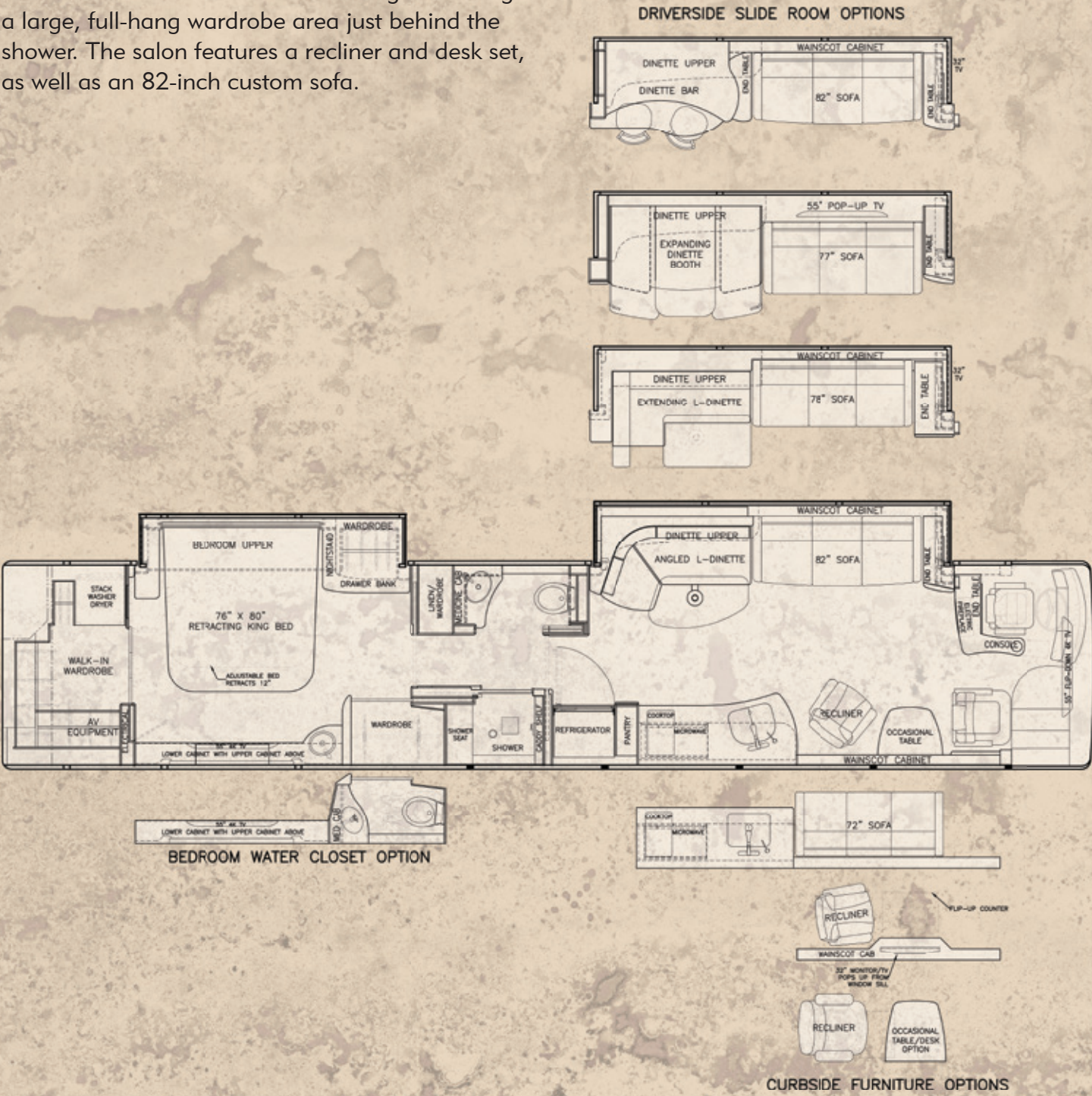
PALM BEACH | PREVOST X3-45 CHASSIS WITH TWO SLIDES

The Palm Beach floorplan features an abundance of bedroom storage including a large hanging wardrobe in the rear. Two water closets provide convenience and the L-dinette is engineered with hidden storage behind the seats and a table top that moves in and out, as well as swiveling for easy access.



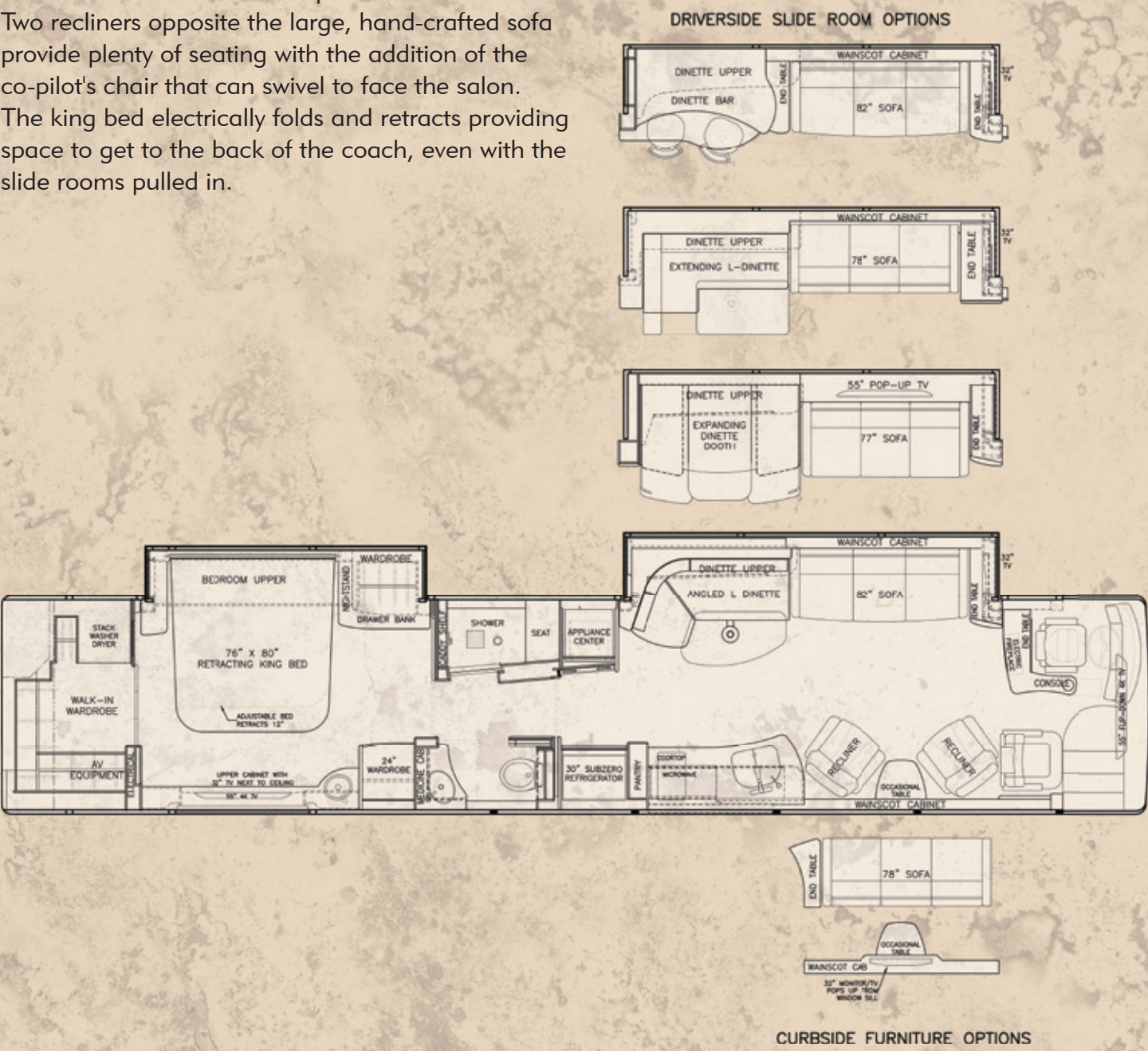
NEWPORT BEACH | PREVOST X3-45 CHASSIS WITH TWO SLIDES

The Newport Beach floorplan comes equipped with an abundance of bedroom storage including a large, full-hang wardrobe area just behind the shower. The salon features a recliner and desk set, as well as an 82-inch custom sofa.



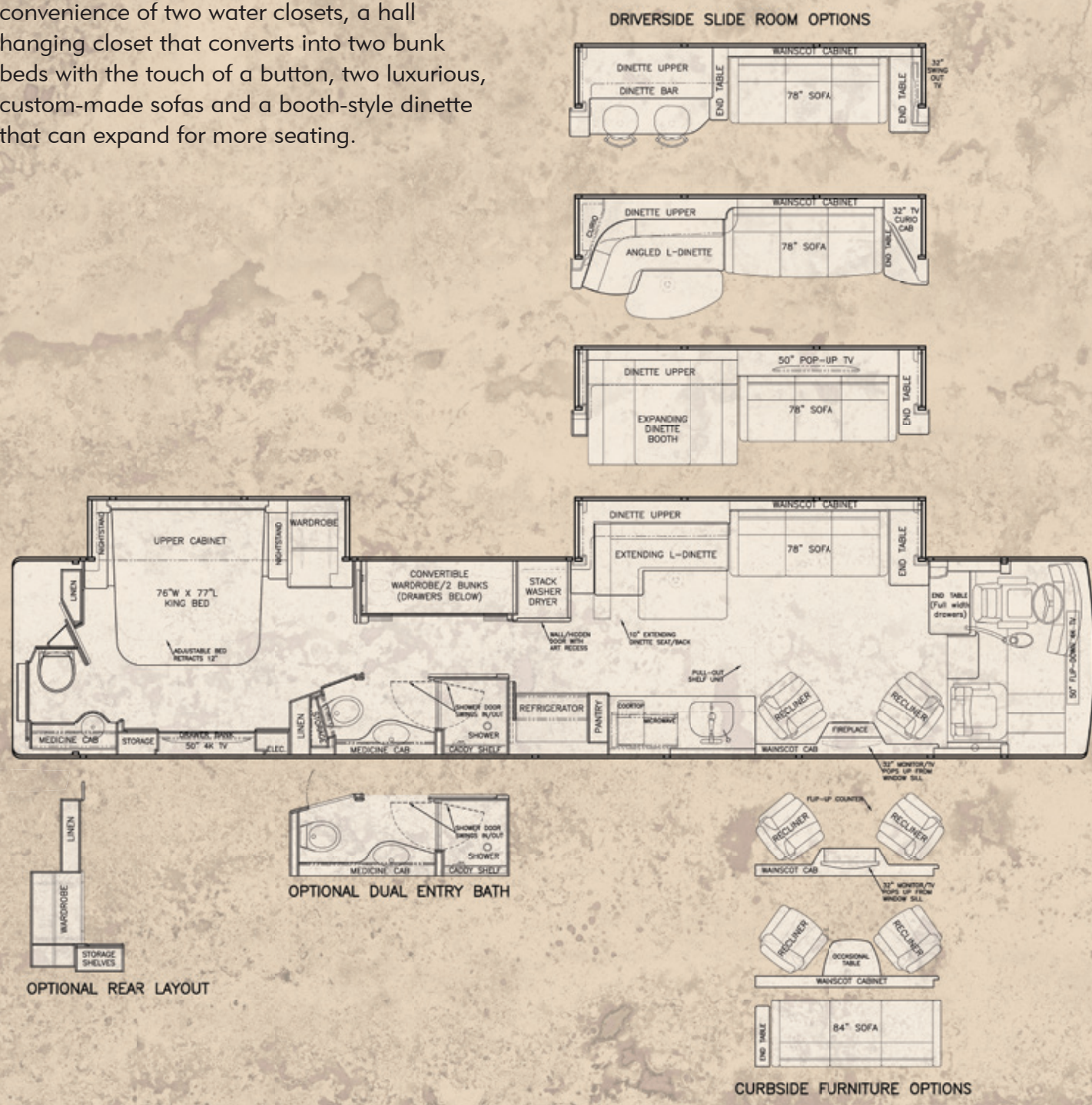
MONTEREY | PREVOST X3-45 CHASSIS WITH TWO SLIDES

The Monterey floorplan is designed with an angled L-dinette to offer additional space in the salon. Two recliners opposite the large, hand-crafted sofa provide plenty of seating with the addition of the co-pilot's chair that can swivel to face the salon. The king bed electrically folds and retracts providing space to get to the back of the coach, even with the slide rooms pulled in.



BEL AIR | PREVOST H3-45 CHASSIS WITH TWO SLIDES

Choose the Bel Air floorplan and enjoy the convenience of two water closets, a hall hanging closet that converts into two bunk beds with the touch of a button, two luxurious, custom-made sofas and a booth-style dinette that can expand for more seating.



JUPITER | PREVOST H3-45 CHASSIS WITH TWO SLIDES

The Jupiter floorplan features a water closet hidden behind an art door, large shower with dual swing door, innovative storage above the bed, motorized extended dinette seating, pop-up television across from the salon sofa and a fireplace.



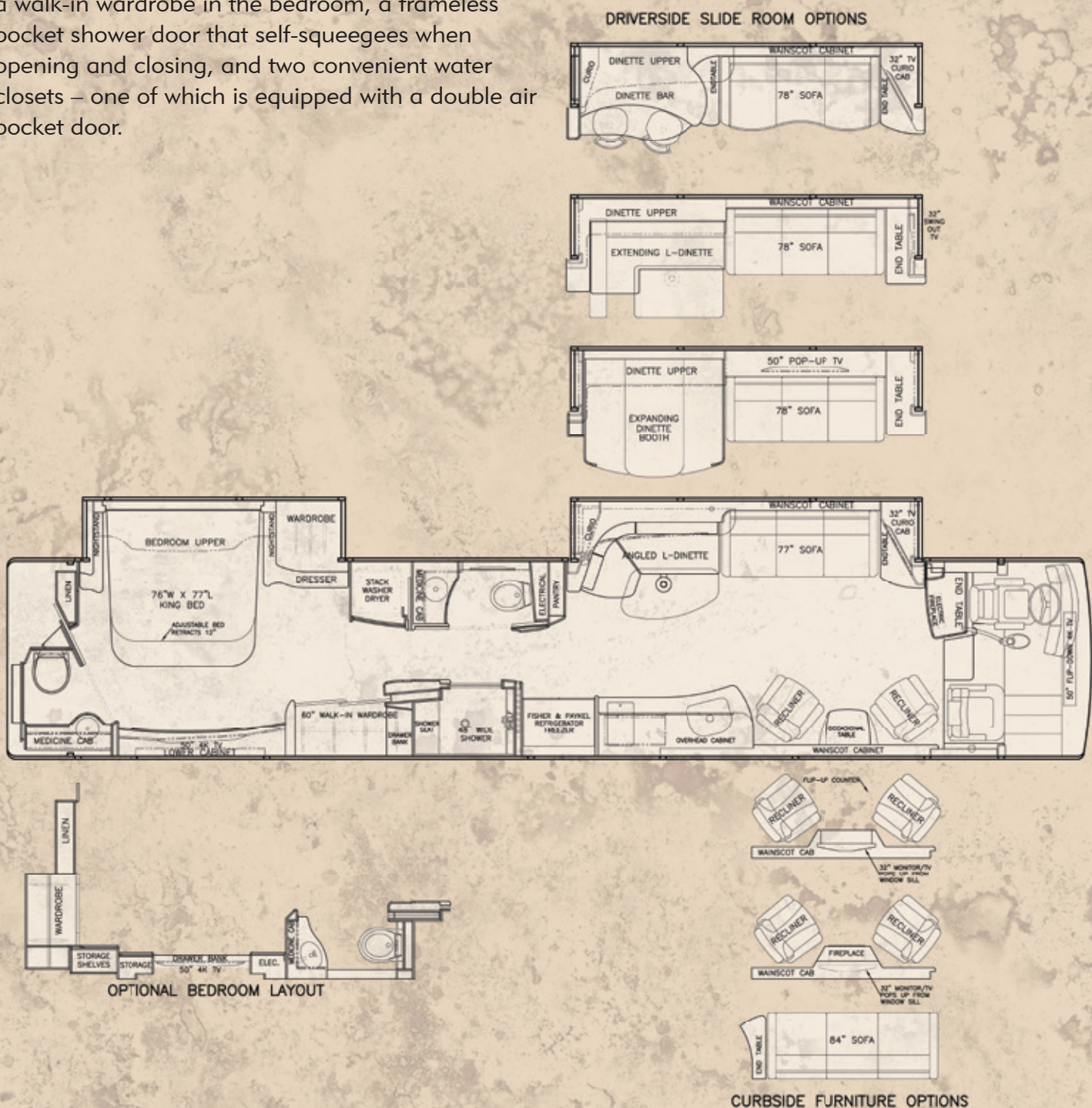
MALIBU | PREVOST H3-45 CHASSIS WITH TWO SLIDES

Enjoy a large shower equipped with a self-squeegeeing pocket door, a heat-producing salon fireplace and the hidden appliance center. Concealed behind a door designed to blend flawlessly into the wall, this “Kitchen Dream Center” houses a steam oven, advanced coffee center and other appliances customizable to your lifestyle, such as wine cabinet or even extra storage.



NAPA | PREVOST H3-45 CHASSIS WITH TWO SLIDES

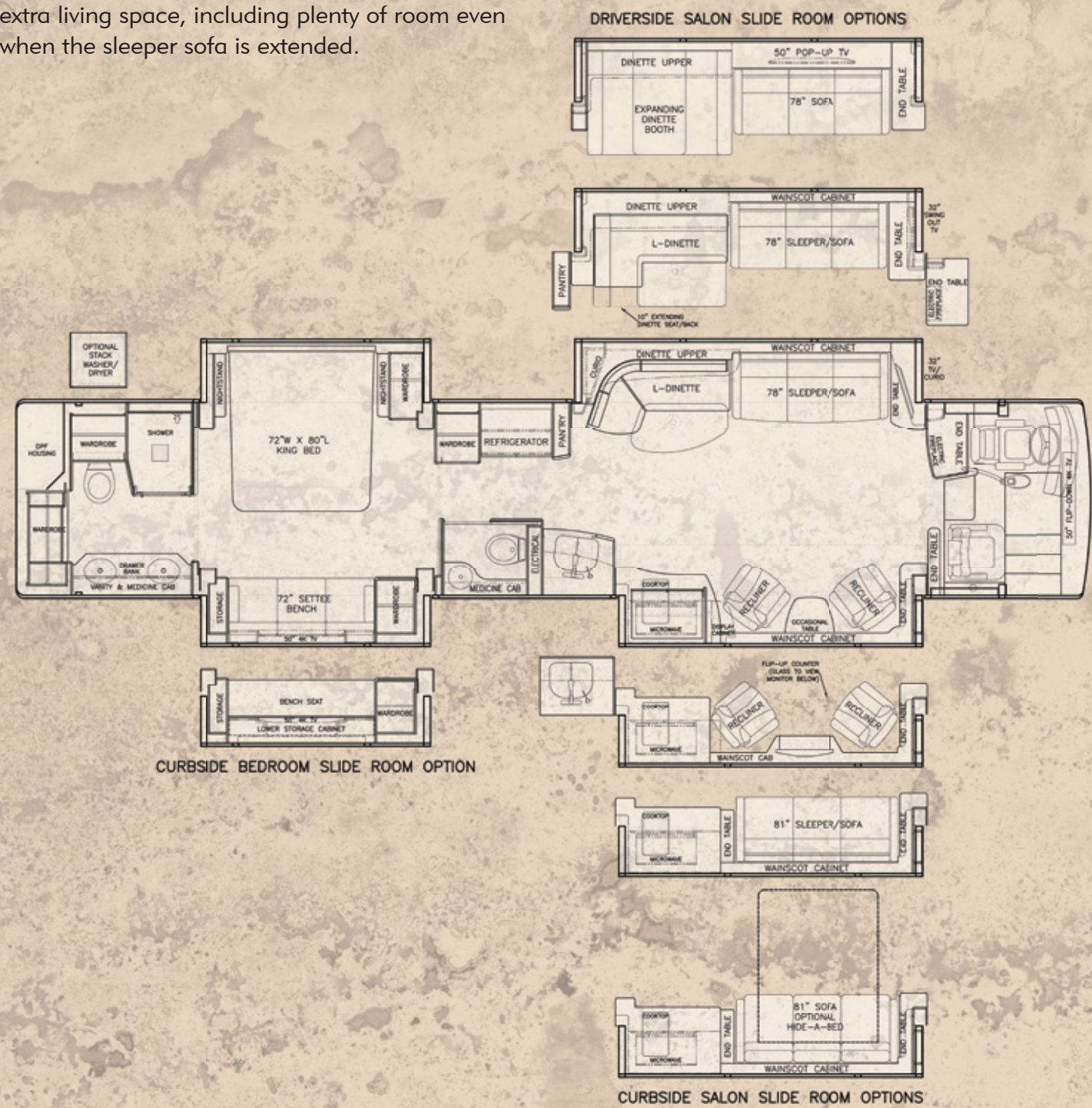
The Napa floorplan features extra storage including a walk-in wardrobe in the bedroom, a frameless pocket shower door that self-squeegees when opening and closing, and two convenient water closets – one of which is equipped with a double air pocket door.



OPTIONAL BEDROOM LAYOUT

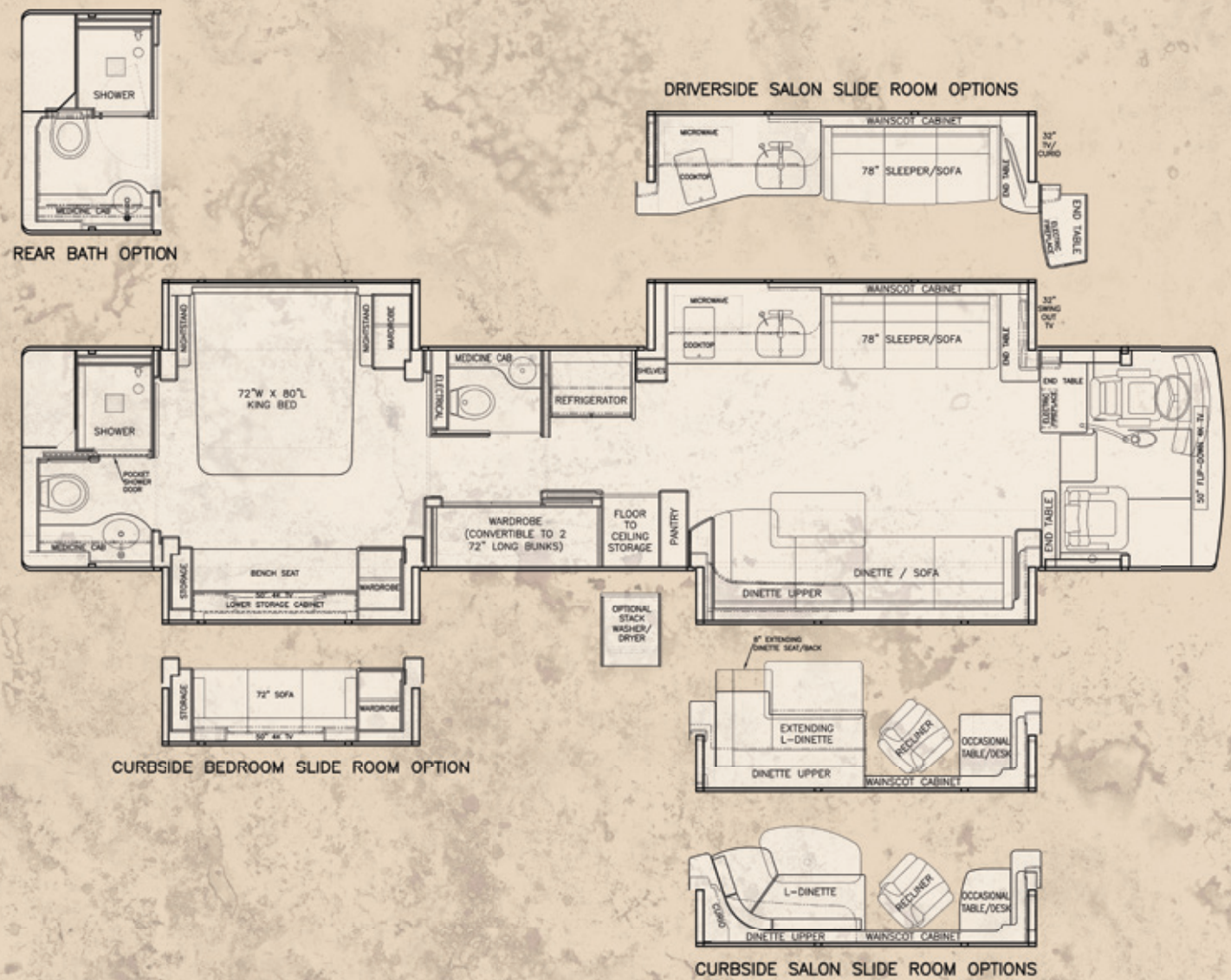
GRAND CAYMAN | PREVOST H3-45 CHASSIS WITH FOUR SLIDES

If a large, private bathroom is important to you then this is your floorplan. The Grand Cayman’s generous rear bathroom features a spacious shower, double sink vanity and an abundance of closet storage. An additional water closet is forward of the bedroom for convenience and guest use. Four slides provide extra living space, including plenty of room even when the sleeper sofa is extended.



BANDON | PREVOST H3-45 CHASSIS WITH FOUR SLIDES

This bath-and-a-half quad-slide maximizes storage with a convertible wardrobe-to-bunks feature as well as large floor-to-ceiling pantry storage. Beautifully hidden behind a pocket door for enhanced user experience, this coach is pre-plumbed for a washer/dryer. This floorplan provides all the comforts of home, including the option to sleep eight if needed. The sofa/dinette combination has the option of a hide-a-bed as does the couch. The bedroom settee sofa and large shower with air pocket door elevates the bedroom to a full-on master suite.



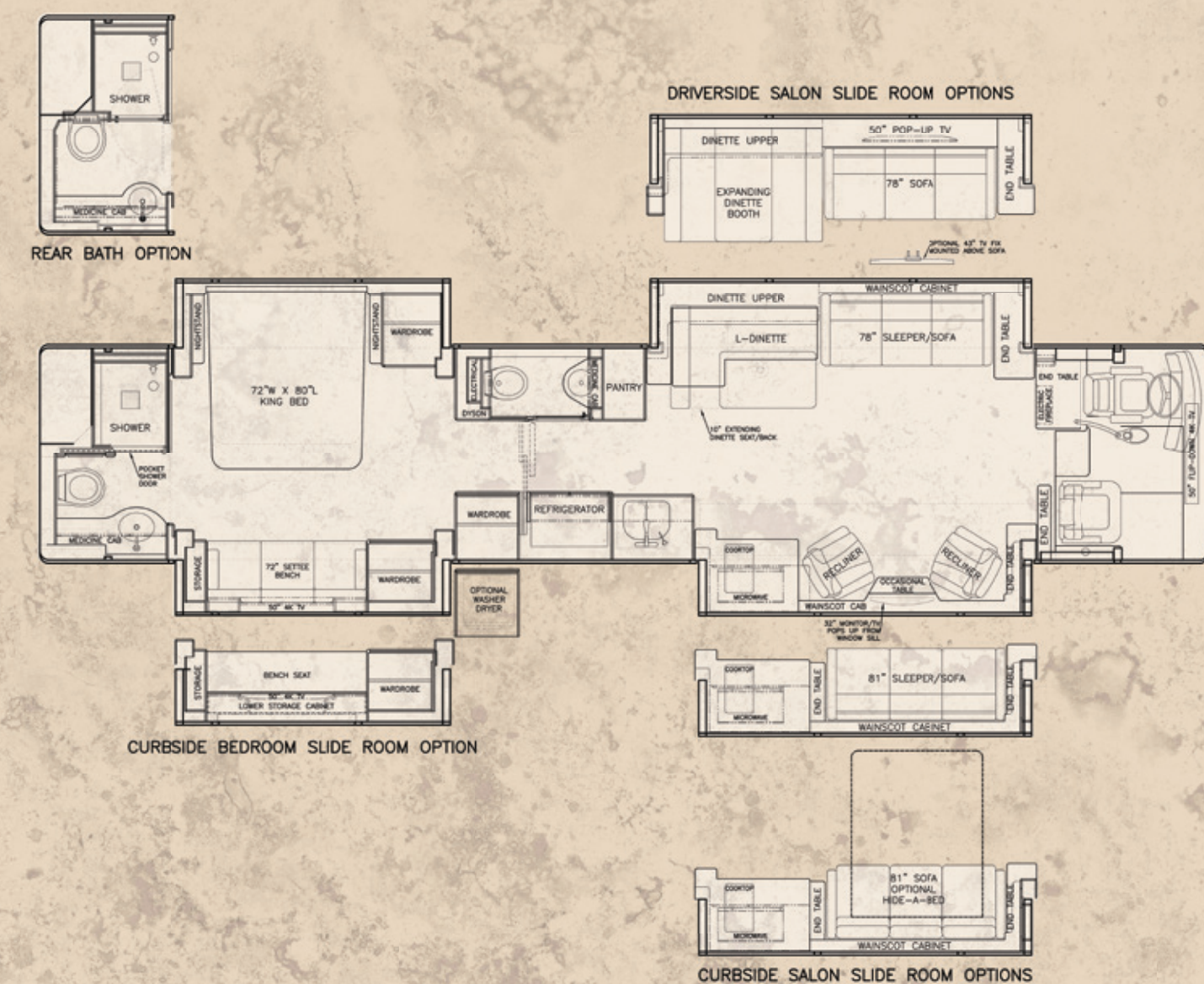
## JACKSON HOLE | PREVOST H3-45 CHASSIS WITH FOUR SLIDES

The four-slide Jackson Hole floorplan comes equipped with a large rear bathroom featuring an immense shower, a double sink vanity and an abundance of closet storage. An additional water closet is forward of the bedroom for convenience and guest use. The salon features a large, custom sleeper sofa and oversized occasional table/desk.



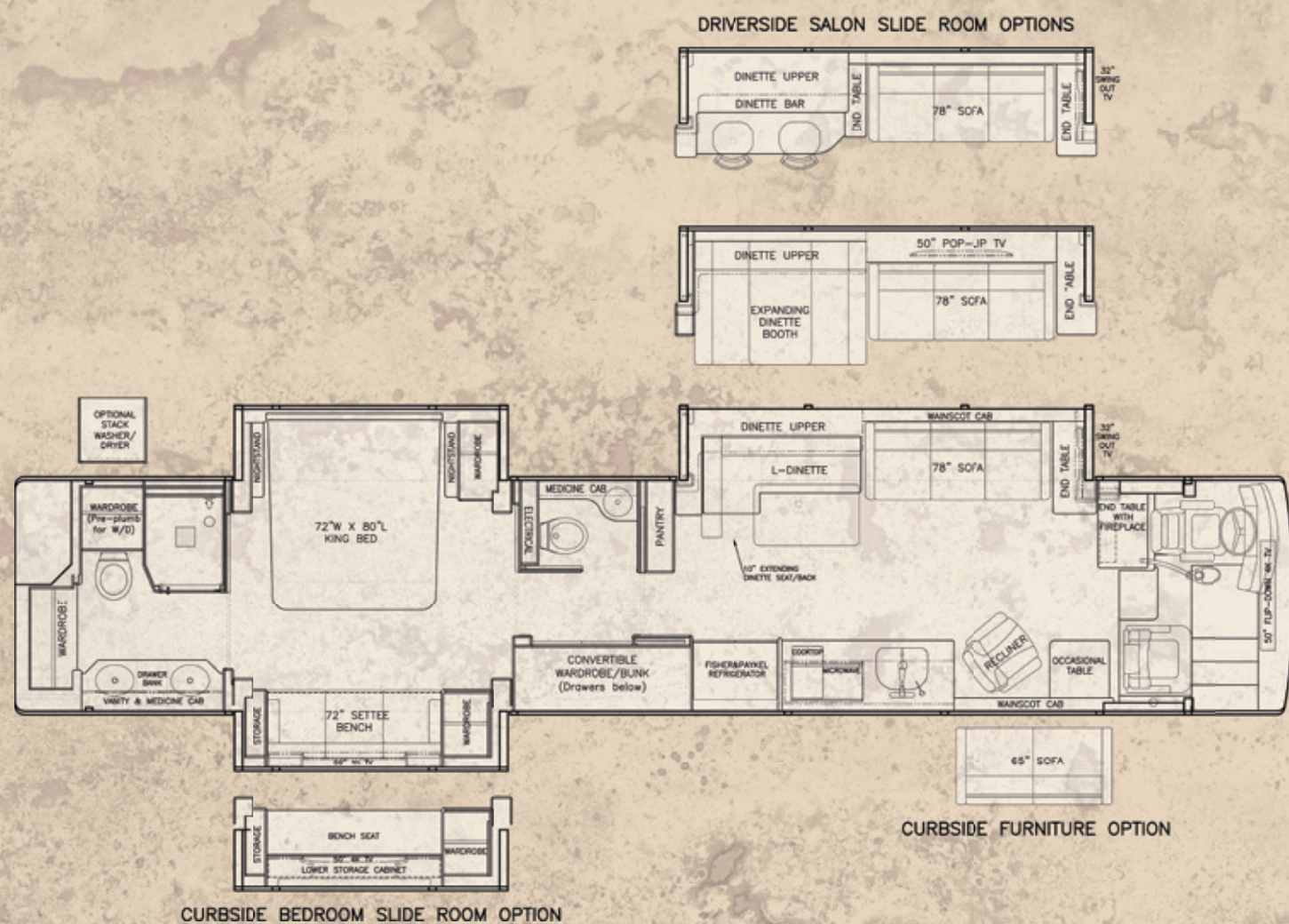
## KAUAI | PREVOST H3-45 CHASSIS WITH FOUR SLIDES

With a spacious shower featuring a liquid crystal pocket door, this quad-slide H3 floorplan has it all – including a 32-inch hallway, which includes an additional 6 inches. The concealed front water closet is hidden behind an art niche wall/door thereby extending the look and feel of the salon. Large pantry, double recliner and pop-up, 32-inch, high-definition television are only a few of the features that set this floorplan apart.



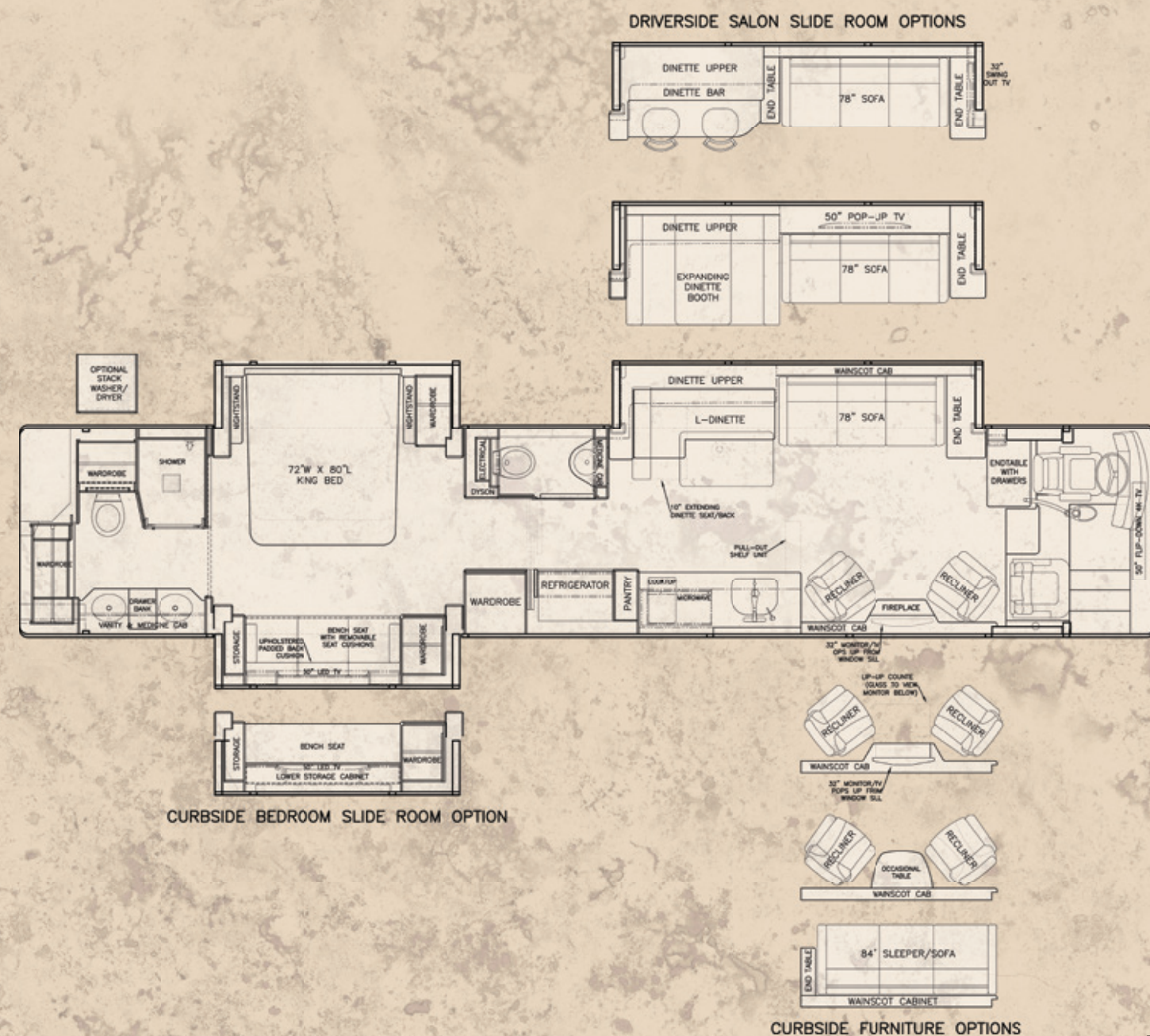
## BOCA RATON | PREVOST H3-45 CHASSIS WITH THREE SLIDES

With three slides, the H3-based Boca Raton provides all the amenities for a comfortable life on the road. The rear superbath features two vanity sinks, oversized shower with liquid crystal privacy walls and a wardrobe that's pre-plumbed for a stackable washer and dryer. In addition to the convertible king-sized bed, there's a wardrobe-to-bunks feature, large pantry and extending L-dinette, which makes this the perfect Marathon for family and friend time.



## JUNEAU | PREVOST H3-45 CHASSIS WITH THREE SLIDES

If wide-open spaces and intelligent design are what you seek, the Juneau, built on Prevost's H3 triple-slide, is your ticket to luxury. With wide walkways, extra large rear bath, oversized shower with privacy glass, ample closet space, midship half bath for visitors, fireplace and extended salon, this floorplan is functional and spacious.



CHASSIS SPECIFICATIONS

- Volvo D13 500HP engine
- 304 Surgical grade stainless steel construction
- Fully integrated structure including walls, ceiling, front and back
- Allison 4000MHR transmission
- Transmission retarder
- Volvo (D.I.D.) driver information display controls
- 91.5” coach interior height (X3-45)
- Driver’s air conditioning
- Thermopane windows
- Prevost and Valid manufacturing slide-outs
- Electronic stability program
- Xenon low beam headlamps
- Tire pressure monitoring system with LED dash display
- Trueline auto leveling system
- Side view mirrors with integrated turn signals
- Prevost Fusion System - Heads up display, front collision mitigation & lane departure warning systems

WINDOW TREATMENTS

- Cockpit window treatments
  - Electric front windshield, driver and entrance door
  - Pleated privacy shades with remote control
- Salon/dinette window treatments with remote control
  - Electric window coverings
  - Designer choice window valance treatments
  - Solid surface window sills
- Bedroom window treatments with remote control
  - Electric window coverings
  - Solid surface window sills

CABINETRY/FINISH SPECIFICATIONS

- Laminated, fabric lined cabinets with radius bends throughout interior
- Headerless air powered style pocket doors
- Bamboo, dovetail drawer boxes throughout
- Adjustable shelves included throughout

COCKPIT SPECIFICATIONS

- Deep lacquer instrument dash panels and leather wrapped dash
- Entry storage step
- Stone or porcelain entry and landing
- Polished stainless sidewalls
- Custom dash matching handrails
- Wood and leather steering wheel with cruise and retarder
- Motorized co-pilot seat footrest/platform

FLOOR COVERING

- Multiple flooring options and patterns available
  - Material selections include: Stone, wood planking, porcelain tile and carpet
  - Optional under-floor radiant heating available

FURNITURE

- ISRI leather pilot seat with air suspension and three point seat belt
- 28” wide leather co-pilot seat with three point seat belt
- Massage units in pilot and co-pilot seats
- Custom built sleeper sofas by Marathon
- King size bed standard on all floorplans including:
  - Motorized slide/tilt mechanism for 12” additional aisleway and enhanced TV viewing
  - Laminated latex king size mattress
- L-shaped dinette with “hidden” seat back storage

INTERIOR LIGHTING

- Flush 12V LED spotlighting with accent matched frames
- Master light switches at entrance and bedroom
- Soft start fade on/off lighting control
- RGB infinite color LED ceiling accent lighting
- Warm white LED counter top accent lighting throughout

APPLIANCES

- Induction cooktop with cover
- Concealed microwave/convection oven
- 15 cubic foot refrigerator with automatic travel lock
- “Dishdrawer” dishwasher with automatic travel lock
- Stacked washer/dryer on double slide-out coaches
- Pre-wire, pre-plumb and pre-vent on triple and quad slide-out coaches

EXTERIOR SPECIFICATIONS

- Custom design paint scheme including seven layers of clear coat
- Automatic awnings with custom roof caps
- Two curbside LED patio lights
- Custom polished stainless steel trim package on rear engine door
- Polished stainless steel rub rails and custom front grilles

UNDERBELLY, UTILITY AND ENGINE BAYS

- Euro/American two car package
- Entertainment center with pull-out/swing-out 4K ultra high definition TV and sound bar
- 120V air compressor
- Four Zip Dee folding chairs in custom holder

AIR CONDITIONING/HEATING

- Four 15,000 BTU roof air conditioning/heat pump systems, with heat strips
- Thermostatically controlled and hidden vent system
- Diesel fired variable speed furnace (hydronic system) with four heat exchangers
- Four 120V AC electric heaters with remote thermostats
- Marathon climate control system

POWER MANAGEMENT

- 20kW turbo-charged generator on a roll-out with pressure regulated air bag mounts
- Four 3,000W, 24V inverter/chargers
- House battery system includes six 4D house batteries and one isolated group
- 24 generator battery
- “Auto-gen” battery charging system
- Four 24V/150Amp alternators. Two for chassis and two for house battery charging
- Battery charger in engine bay. Maintains chassis batteries during long term storage
- Electric shore cord reel with remote, 50-amp power cord
- Internal “Jump Start” capabilities between house and chassis batteries

ELECTRICAL

- TechLink® “intelligent” electrical system with integrated modem for remote diagnostic service capability
- Solid core conductor wire for 120V system
- LED blown fuse indicators

AUDIO/VIDEO

- AM/FM/XM Tuner for use in cockpit (sources shared with coach audio system)
- Stationary satellite antenna system with two DirecTV HD receivers; one with DVR
- Surround sound speaker system with subwoofer
- 4K ultra high definition LED TVs throughout: 50” in salon, 50” in bedroom, 50” in bay
- One Blu-Ray DVD/CD players
- In-Motion satellite antenna system with one DirecTV receiver
- HDMI digital media switcher capable of handling 4K ultra high definition signals
- Crestron AV control system with three Apple iPads. Includes lighting, shades and climate controls
- Smart phone control of coach resources
- Marathon’s exclusive “theater” button for one touch control of lights, blinds and AV equipment

COMMUNICATION/INFORMATION SYSTEMS

- Garmin, voice prompted GPS mapping system with pilot touch screen control
- TechLink® status screens displayed on Crestron panels
- Burglar alarm with two remote key fob activators including motorized deadbolt operation
- Power loss indicators, smoke and CO detectors
- 360 degree exterior camera system with hard drive for recording
- Slide room roof camera (one for each slide) to see debris before retracting rooms
- 9” dash mounted Crestron touch screen for AV, camera and coach system control and display
- Web based smart phone (iPhone only) remote control of select coach features and viewing of interior camera

PLUMBING

- 20 gallon dual element water heater with two separate power sources
- Seamless, non-corroding, polyethylene water and holding tanks with electric black and grey dump valves and Freedom Plus® automatic sewer system
- Temperature sensing shower mixer valve
- Two high output 12V water pumps

CEILING STYLES

- Salon/galley/bedroom “tiered” style ceilings with LED color wash accent lighting
- Multiple ceiling patterns available
- Sculpted, overlaid, vinyl or leatherette (for easy cleaning) wrapped panels with backlit LED panels
- Multiple ceiling lighting options available

MISCELLANEOUS

- Toll free 800 number for after hours service information
- Exclusive Marathon Coach Club membership
- Bumper-to-bumper two-year full warranty
- “Frameless” glass shower doors with residential grade, accent matching hardware
- Pre-connected 50 foot fresh water hose on motorized reel
- Fresh water “auto-fill” system
- Electric fireplace included in salon



## MARATHON COACH CLUB INTERNATIONAL



Marathon Coach Club International is an exclusive club of Marathon motorcoach owners (of both new and certified pre-owned) who gather throughout the year for

fun-filled rallies at unforgettable locations. As a Club member, you'll meet fellow owners, develop lasting relationships and have the adventures of a lifetime. Whether you live for unforgettable culinary experiences or thrill over exclusive tours, there's something for everyone at our exhilarating rallies.

## GET THE LATEST MARATHON NEWS



YouTube

*The Marathon Coach Blog*

From Marathon's latest pictures to production floor news to upcoming rally information, you'll be the first to know about the most recent goings on and everything Marathon when you connect with us via social media or visit our online magazine. Filled with dynamic color photographs, layouts and articles, you can find the online version of "The Maratime" at [www.themaritime.com](http://www.themaritime.com). Join the

conversation by liking our Facebook page or following our Twitter account. Find us at [www.facebook.com/marathoncoach](http://www.facebook.com/marathoncoach) and [www.twitter.com/MarathonCoachHQ](http://www.twitter.com/MarathonCoachHQ). Be inspired by our Pinterest boards at [www.pinterest.com/marathoncoach1](http://www.pinterest.com/marathoncoach1) or see us on YouTube at [www.youtube.com/marathoncoach1](http://www.youtube.com/marathoncoach1).

**Marathon Coach Texas**  
800-448-8881

**Marathon Coach  
World Headquarters**  
800-234-9991

**Marathon Coach Florida**  
800-437-8295

[www.marathoncoach.com](http://www.marathoncoach.com)